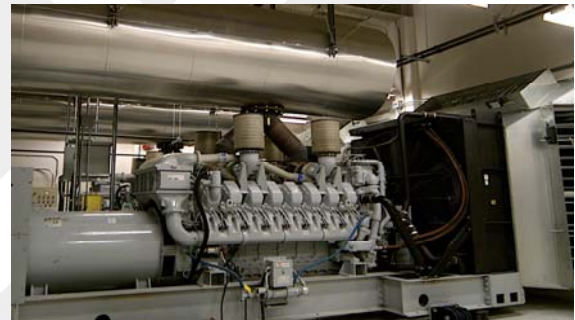




houle electric

Electrical Contracting Construction Division

www.houle.ca



With over 65 Years' experience in our industry, Houle Electric has participated in the successful construction and renovation of numerous Western Canadian landmarks and institutions. From bridges, mines and ports to hospitals, schools and shopping malls, Houle has extensive experience in all facets of industrial, commercial and institutional projects. We pride ourselves on excellence in project management and comprehensive electrical contracting, design-build and P3 services.

Houle Electric consistently delivers on time, on budget and to the very highest of industry standards. As evidenced by numerous project awards, we are renowned for our quality workmanship, progressive technology and innovative cost saving solutions. Through the integration of our many other divisions - including security and network systems - we deliver remarkable solutions with significant economies of scale.

Furthermore, over the last ten years, Houle Electric has maintained the best safety record of all large BC-based contractors.

We have the expertise, resources and bonding capacity to deliver on the most challenging and complex of projects. Our people and our partners enable us to continue building on over six decades of quality workmanship and ethical business practices.

Recent Awards:

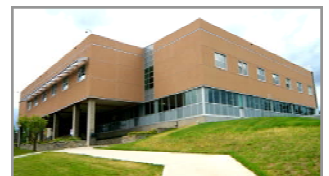
VRCA Gold

Abbotsford Regional General Hospital & Cancer Centre / P3



VRCA Gold

Nanaimo Regional General Hospital Perinatal Building



Safety. Our #1 Priority.

Houle Electric is 10-time VRCA **Safety Award Winner** in the Large Contractor Category (200,000+ person hours)

Other Awards:

Trade Contractor of the Year (2007)

VRCA Gold Awards:
UBC Dentistry Building, Royal Jubilee Hospital

VRCA Silver Awards:
Dockside Green LEED Platinum, Centerm Port, Berth Expansion, Women's & Children's Hospital (Server Room), UBC Life Sciences Building, Lions Gate Bridge Upgrade

Consumers Choice Award (10 years running)

CONSTRUCTION DIVISION CONTACTS:

VANCOUVER/ LOWER MAINLAND:	JONATHAN LASHIN	jonathan@houle.ca	604.434.2681
VICTORIA/ SOUTH ISLAND:	RANDY NOBLE	rnoble@houle.ca	250.388.5665
NANAIMO/ NORTH ISLAND:	LEIGH BENNETT	lbennett@houle.ca	250.758.3011
KELOWNA-KAMLOOPS/SOUTHERN INTERIOR:	RICHARD DAVIES	rdavies@houle.ca	250.765.9660
PRINCE GEORGE/ NORTHERN BC:	KEITH PARSONAGE	kparsonage@houle.ca	250.562.2009